

STOREY PARK COMMUNITY DEVELOPMENT DISTRICT PARKING AND TOWING RULES

Adopted October 24, 2019 by Resolution 2020-01
Revised September 12, 2023 by Resolution 2023-14
Revised November 5, 2024 by Resolution 2025-01
Revised April 7, 2026 by Resolution 2026-03

- 1.0 Parking and Towing. The rules and regulations of this Section 1.0 are hereby adopted by the Storey Park Community Development District (the "District") and shall be referred to as the "District Parking and Towing Rules."
- 1.1 Applicability. The District Parking and Towing Rules shall be applicable on, over, or within those (a) designated paved parking or stalls owned by or dedicated to the District (the "Parking Areas"), (b) District rights-of-way, including but not limited to the roads, streets, thoroughfares, swales, and sidewalks owned by or dedicated to the District or which the District is responsible for maintaining (the "District Right-of-Way"), as generally depicted on the revised parking and towing map shown in Appendix 1.0 (the "Revised District Parking and Towing Map"), which is attached to these Rules and is specifically made a part hereof, as well as (c) any other property owned by or which the District is responsible for maintaining. For purposes of these District Parking and Towing Rules, "vehicle" shall include any self-propelled vehicle or motorized means of transport.
- 1.2 District Parking Lots or Areas. Non-commercial vehicles not otherwise prohibited from parking on District Right-of-Way or Parking Areas are permitted to park within designated District parking lots or parking areas, which includes Parking Areas throughout the community on District property. No trailers shall be parked in any of the defined Parking Areas of the District. Should the trailer be attached or hooked up to a vehicle and parked in violation of these Rules, the trailer and the vehicle are each subject to towing.
- 1.3 Revised On-Street Parking.
 - 1.3.1 On-street parking in the District is prohibited in those areas as marked in the Revised District Parking and Towing Map attached hereto as Appendix 1.0, in addition the following prohibitions apply through the District:
 - (a) Reserved.
 - (b) Commercial vehicles (which for purposes of this provision are defined as vehicles not designed and used for normal personal/family transportation, vehicles with work racks, tool racks and/or visible equipment, and/or vehicles bearing lettering, graphics, contact information, logos, advertising and/or any other commercial insignia), limousines, lawn maintenance vehicles,

construction vehicles, trailers of any kind, vehicles for hire, or vehicles used in business of or for the purpose of transporting goods, equipment, passengers and the like, or any trucks or vans which are larger than one ton, or any dual-wheel trucks shall not be parked on, over, or within the District Right-of-Way or any District parking lots or Parking Areas, except during the period of delivery or the provision of services to the adjacent residential unit(s). Such vehicles temporarily parked in accordance with this section shall be fully parked on a paved surface designed for parking or vehicular travel. No portion of the vehicle shall be parked on, over, or within a landscaped or grassed surface of the District, including but not limited to the swale.

(c) Recreational vehicles, including campers, mobile homes and motor homes, regardless of size, all-terrain vehicles (ATVs or ATCs), go-carts, motorcycles, mini- motorcycles, mopeds, unregistered vehicles, boats, and trailers of any type, are prohibited at all times from parking or being parked on, over, or within any portion of the District Right-of-Way or District parking lots or Parking Areas; however, recreational vehicles may be temporarily parked in said areas for no more than eight (8) hours for the purposes of loading and unloading only.

(d) Golf carts are prohibited at all times from parking or being parked on, over, or within any portion of the District Right-of-Way or District parking lots or Parking Areas. Golf carts being utilized at the time for the purposes of maintenance of properties within the boundaries of the District and which are owned and operated by the District, a homeowners or property owners' association, or an agent thereof, are exempt from this provision between the hours of 6:00 A.M. and 8:00 P.M. of the same day.

(e) Individuals working in the District may park within the areas actively under construction in the District as specifically permitted by the District Manager or his/her designee.

1.3.2 No portion of any vehicle shall be parked on the District Right-of-Way for any period of time within twenty (20') feet of any District mailbox kiosk within the District, unless parked within a designated District parking stall in accordance with Section 1.2 above. No portion of any vehicle shall be parked on the District Right-of-Way in a manner that blocks access to single-family home mailboxes. A clearance of fifteen (15') feet before the mailbox and fifteen (15') feet after the mailbox is required.

1.3.3 No vehicle bearing a "For Sale" or similar sign shall be parked on, over, or within the District Right-of-Way or any District parking lot or Parking Area.

1.3.4 Vehicles temporarily parked in accordance with Section 1.3.1 above shall not park in any manner which has the effect of disrupting the normal flow of traffic, which would block the ingress or egress of trucks, public service vehicles, and emergency

vehicles, which would require other vehicles to leave the paved surface of the District Rights-of-Way to pass, or which would result in a vehicle being parked in a portion of more than one parking stall of a District Parking Area. Vehicles temporarily parked in a fifteen (15) minute loading zone area, as marked in the Revised District Parking and Towing Map attached hereto as Appendix 1.0, shall only use such parking stall for loading and/or unloading and shall not remain parked in such parking stall for a period exceeding fifteen (15) minutes. In addition, vehicles temporarily parked in accordance with Section 1.3.1 above:

- (a) Shall not park facing the wrong direction on the street.
- (b) Shall not park in any manner that blocks access to a driveway.
- (c) Shall not park in any manner that blocks a sidewalk.
- (d) Shall not park with tires on the grass, as this may cause damage to the District's irrigation.
- (e) Shall not park within thirty (30') feet of the approach to a stop sign.

1.3.5 Any vehicle that cannot operate on its own power is prohibited from being parked on, over, or within the District Right-of-Way or any District parking lot or Parking Area, and shall immediately be removed.

1.3.6 No vehicle bearing an expired registration, missing license plate, or a license plate that fails to match the vehicle registration shall be parked on, over, or within the District Rights-of-Way or any District parking lot or Parking Area.

1.3.7 It is a violation of the District Parking and Towing Rules for a vehicle otherwise lawfully parked on, over, or within the District Rights-of-Way or any District parking lot or Parking Area to be covered or partially covered with a tarpaulin or other type of vehicle cover. No vehicle parked on, over, or within the District Rights-of-Way or any District parking lot or Parking Area shall be used as a domicile or residence either temporarily or permanently.

1.3.8 No abandoned, inoperable and/or discarded vehicle (including a Commercial Vehicle, Vehicle, vessel or Recreational Vehicle), or any part thereof, shall be parked, stored or left upon on the District's Property for a period in excess of seventy-two (72) hours. Abandoned, inoperable and/or discarded means a state of disuse, neglect or abandonment. Evidence of "abandoned, inoperable and/or discarded" may include, any one (1) or a combination of the following factors: (1) the vehicle is wrecked; (2) the vehicle is inoperable, as evidenced by vegetation underneath as high as the vehicle body or frame; debris collected underneath; or, the vehicle is being used solely for storage/habitation purposes; (3) the vehicle is partially dismantled, having no engine, transmission or other major and visible part; (4) the vehicle has major and visible parts which are dismantled; (5) the vehicle is incapable of functioning as a vehicle in its present state; (6) the vehicle has only nominal salvage value; (7) the vehicle is incapable of safe operation under its own power, or a vehicle that cannot be self-propelled or moved in a manner it was originally intended to move.

1.4 Parking in Other Areas of the District. Parking of any vehicle or trailer, including but not limited to those referenced in Section 1.3.1 above, is strictly prohibited on or within all non-paved District property, including but not limited to, landscaped or grassed areas within or adjacent to any District Right-of-Way. This prohibition shall remain in effect twenty-four (24) hours per day, seven (7) days per week.

1.5 Enforcement

1.5.1 Towing. Any vehicle parked in violation of the District Parking and Towing Rules may be towed at the vehicle owner's expense by a towing contractor approved by the District Board of Supervisors pursuant to Section 715.07, *Florida Statutes*. Vehicles and vessels parked in violation of the District Parking and Towing Rules may receive a courtesy warning. Notwithstanding the foregoing, any vehicle, trailer, or object parked in violation of the District Parking and Towing Rules shall be subject to towing. Upon direction in writing (email and facsimile are acceptable) from the District Manager or a designee of the District Manager, the tow contractor is authorized to commence towing for a violation or violations of these Rules pursuant to Section 715.07, *Florida Statutes*.

1.5.2 Suspension and Termination of Privileges. A resident's privileges at any or all District Amenity Facilities may be subject to various lengths of suspension or termination by the Board of Supervisors due to violations of these rules.

1.6 Suspension of Rules. The enforcement of the District Parking and Towing Rules may be suspended in whole or in part for specified periods of time, as determined by resolution of the Board of Supervisors of the District. In addition, the enforcement of the District Parking and Towing Rules may be suspended during emergency situations at the discretion of the District Manager.

1.7 Damage to District Property. Should the parking of any vehicle on, over, or within the District Rights-of-Way, District parking lots or Parking Areas, or District Property, or any portion thereof, even if on a temporary basis, cause damage to District infrastructure, landscaping or other improvement, the owner and driver of the vehicle causing such damage shall be responsible to fully reimburse the District to repair or replace such improvement. Damage includes, but is not limited to, staining caused by fluid leaking onto District parking areas. The decision on whether to repair or replace a damaged improvement shall be at the discretion of the District.

1.8 Vehicle Repairs. No vehicle maintenance or repair shall be performed on, over, or within any portion of the District Rights-of-Way, District parking lot or Parking Area, or District property. No vehicles shall be stored, even temporarily, on blocks on, within, or over the District Rights-of-Way, District parking lots or Parking Areas, or District Property.

1.9 Other Traffic and Parking Regulations. Nothing in these District Parking and Towing Rules shall prohibit local law enforcement from enforcing the laws that are a part of the State Uniform Traffic Control Law, Chapter 316, *Florida Statutes*, or any other local or state law, rule or ordinance pertaining to vehicular traffic or parking enforcement.

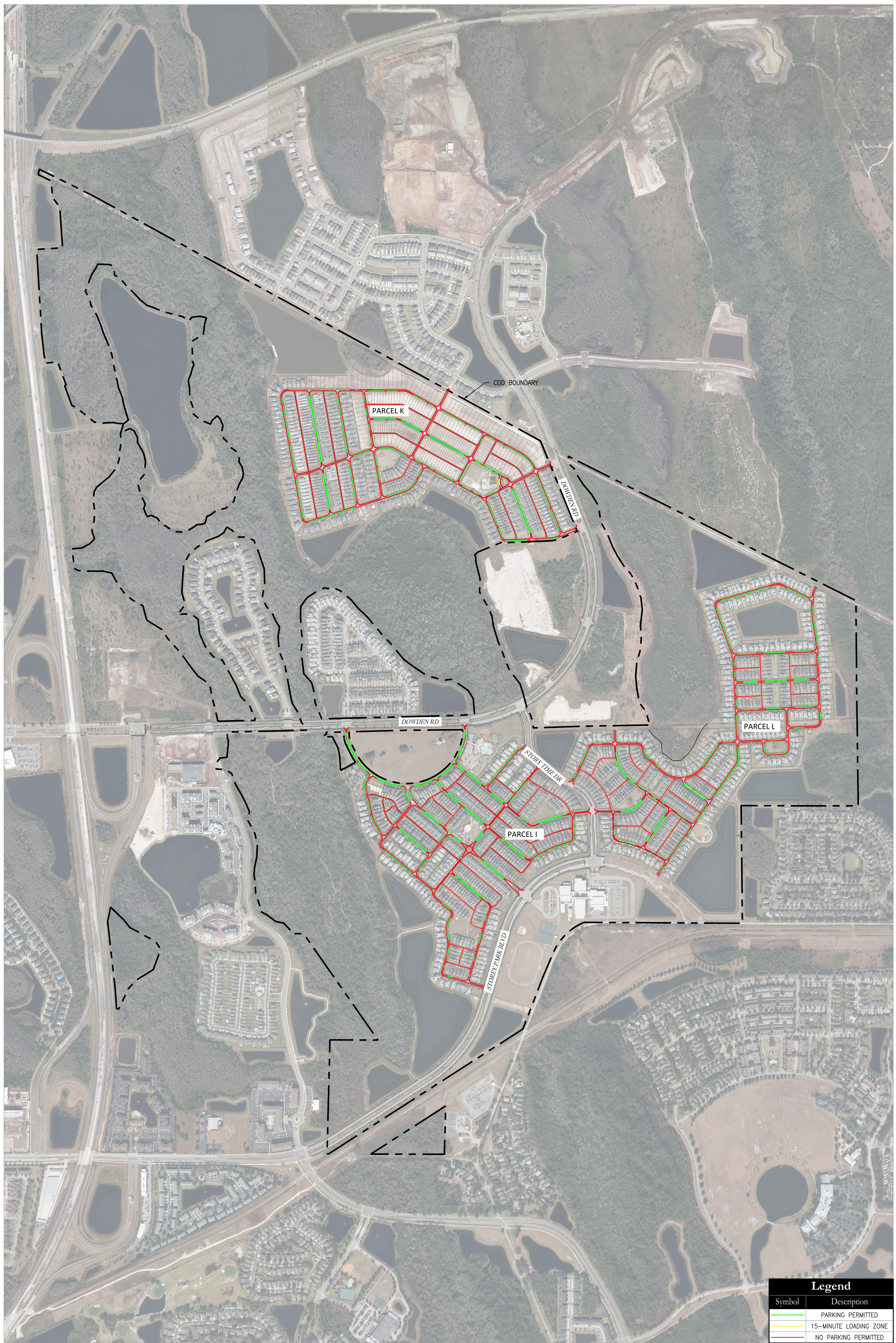
1.10 Parking at Your Own Risk. The District assumes no liability for any theft, vandalism and/or damage that may occur to personal property or vehicles parked on the District's Property pursuant to the District Parking and Towing Rules

1.11 Severability. The invalidity or unenforceability of any one or more provisions of this Rule shall not affect the validity or enforceability of the remaining portions of this Rule or any part of this Rule not held to be invalid or unenforceable

Appendix 1.0

Revised District Parking and Towing Map

[ATTACHED BELOW]



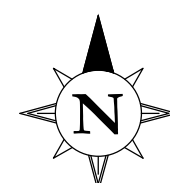
Master On-Site Parking Map

Storey Park Community Development District

PAPE-DAWSON

2602 E. LIVINGSTON ST | ORLANDO, FL 32803 | 407.487.2594
 FLORIDA ENGINEERING FIRM #39101 | FLORIDA SURVEYING FIRM #LB8694

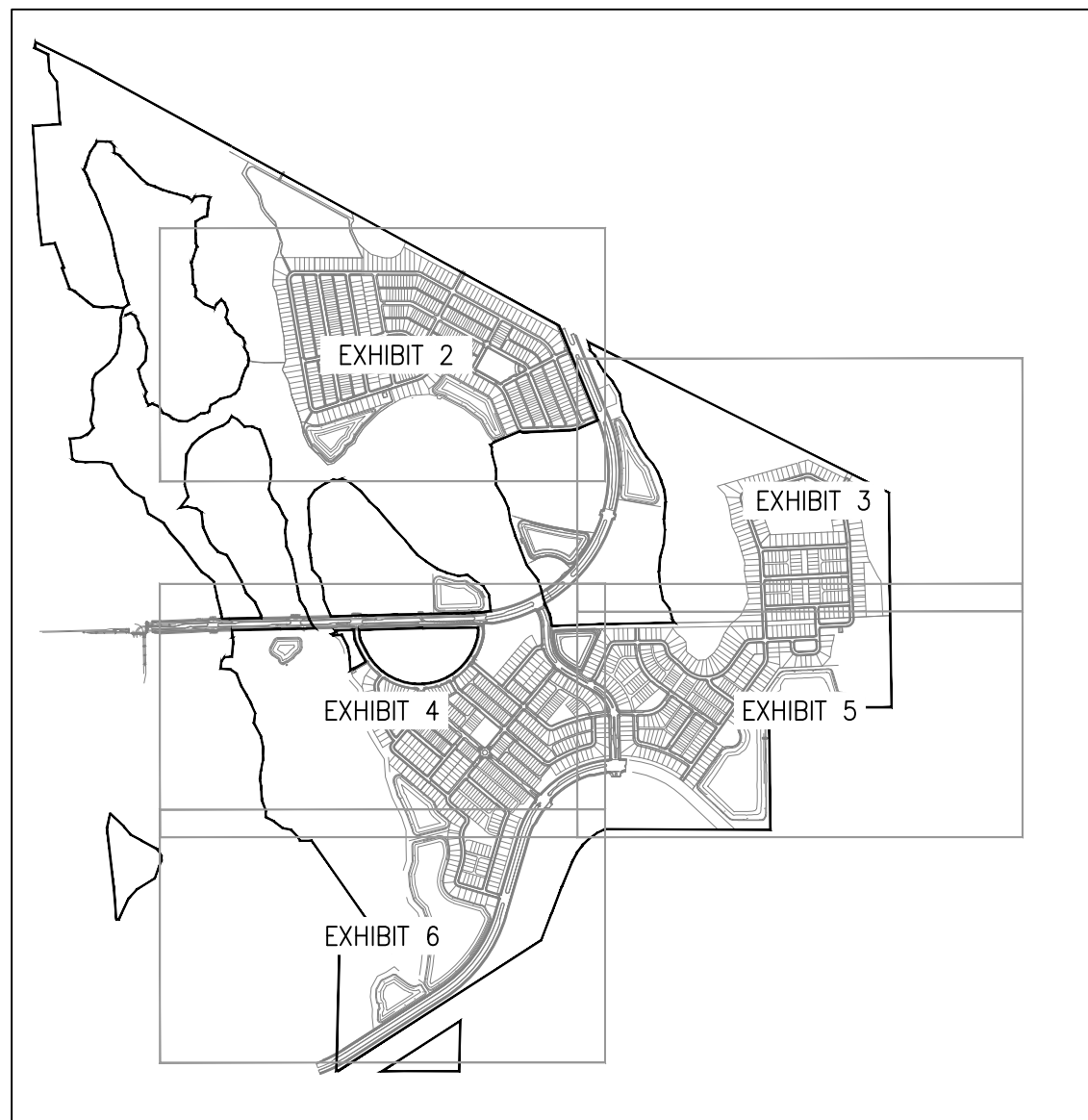
Legend	
Symbol	Description
	PARKING PERMITTED
	15-MINUTE LOADING ZONE
	NO PARKING PERMITTED



SCALE IN FEET

May 21, 2026
 PD Job No.: 15-060

Exhibit 1



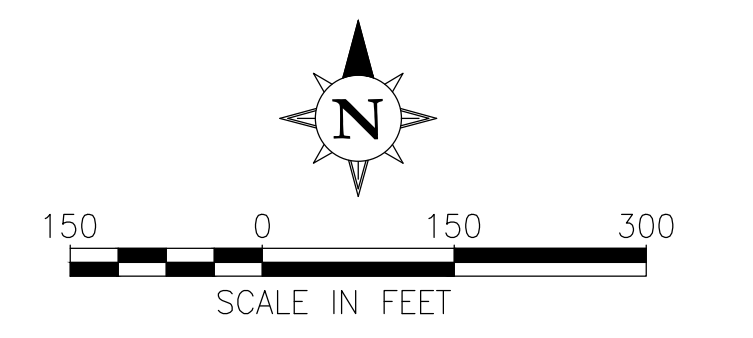
- NOTES:**
- NO PARKING IS PERMITTED WHERE:
 - 30' FROM STOP SIGN
 - 20' FROM SIDEWALK
 - 20' FROM INTERSECTION
 - 15' FROM HYDRANT
 - ON-STREET PARKING BASED ON CONSTRUCTION PLANS & CITY APPROVAL FOR PARCEL I (PHASES 1, 3, 4, & 5), PARCEL J, PARCEL K (PHASES 1, 2, & 3), PARCEL L (PHASES 1, 2, 3, & 4). ADJUSTMENTS TO CONSTRUCTION PLANS MADE PER RESIDENT COMMENTS FOR APPROVED SAFETY. THE PARKING MAP IS PROVIDED FOR REFERENCE ONLY. COMPLIANCE TO ALL APPLICABLE CODES, ORDINANCES, AND REGULATIONS IS REQUIRED.

Match Line
For Cont. See Exhibit 3

Legend	
Symbol	Description
	PARKING PERMITTED
	15-MINUTE LOADING ZONE
	NO PARKING PERMITTED

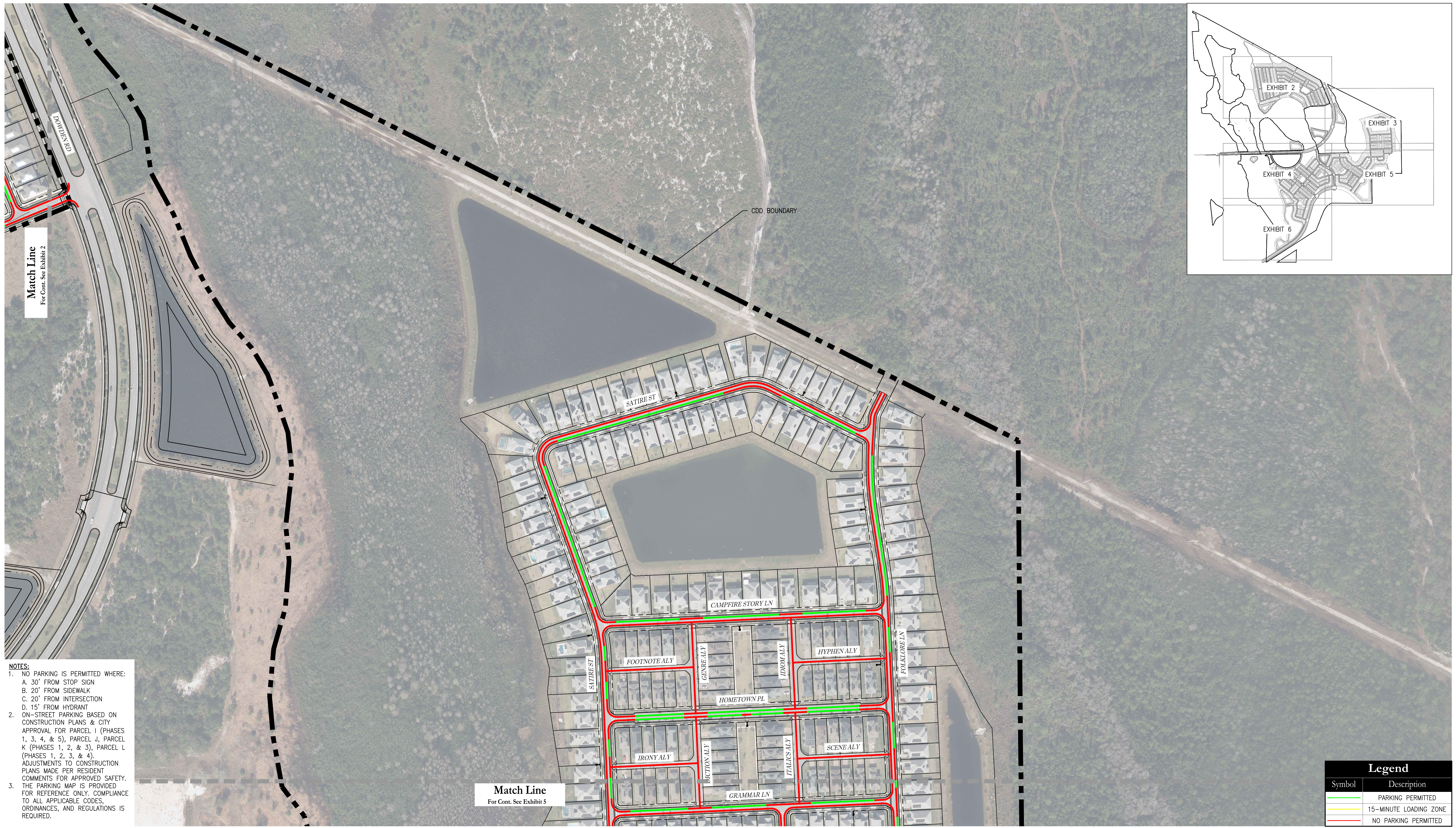
Master On-Site Parking Map
Storey Park Community Development District

PAPE-DAWSON
 2602 E. LIVINGSTON ST | ORLANDO, FL 32803 | 407.487.2594
 FLORIDA ENGINEERING FIRM #39101 | FLORIDA SURVEYING FIRM #LB8694



May 21, 2026
 PD Job No.: 15-060

Exhibit 2



- NOTES:**
- NO PARKING IS PERMITTED WHERE:
 - 30' FROM STOP SIGN
 - 20' FROM SIDEWALK
 - 20' FROM INTERSECTION
 - 15' FROM HYDRANT
 - ON-STREET PARKING BASED ON CONSTRUCTION PLANS & CITY APPROVAL FOR PARCEL I (PHASES 1, 3, 4, & 5), PARCEL J, PARCEL K (PHASES 1, 2, & 3), PARCEL L (PHASES 1, 2, 3, & 4). ADJUSTMENTS TO CONSTRUCTION PLANS MADE PER RESIDENT COMMENTS FOR APPROVED SAFETY.
 - THE PARKING MAP IS PROVIDED FOR REFERENCE ONLY. COMPLIANCE TO ALL APPLICABLE CODES, ORDINANCES, AND REGULATIONS IS REQUIRED.

Match Line
For Cont. See Exhibit 5

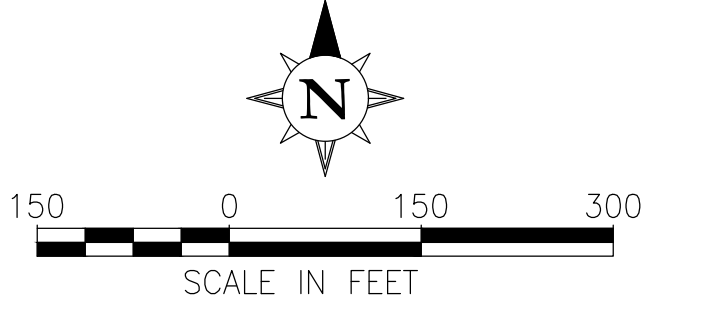
Master On-Site Parking Map

Storey Park Community Development District

PAPE-DAWSON

2602 E. LIVINGSTON ST | ORLANDO, FL 32803 | 407.487.2594
FLORIDA ENGINEERING FIRM #39101 | FLORIDA SURVEYING FIRM #LB8694

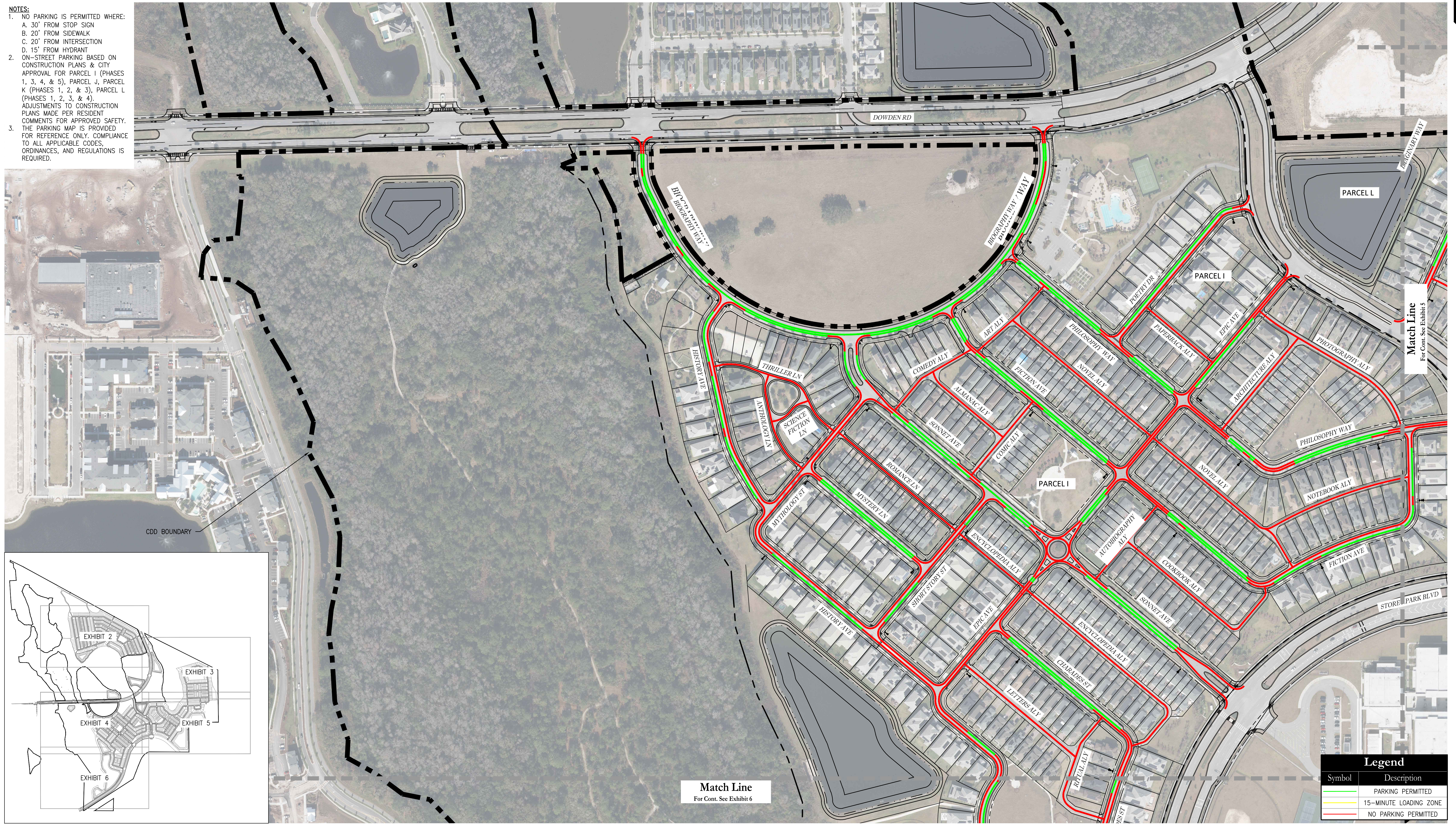
Legend	
Symbol	Description
	PARKING PERMITTED
	15-MINUTE LOADING ZONE
	NO PARKING PERMITTED



May 21, 2026
PD Job No.: 15-060

Exhibit 3

- NOTES:**
- NO PARKING IS PERMITTED WHERE:
 - 30' FROM STOP SIGN
 - 20' FROM SIDEWALK
 - 20' FROM INTERSECTION
 - 15' FROM HYDRANT
 - ON-STREET PARKING BASED ON CONSTRUCTION PLANS & CITY APPROVAL FOR PARCEL I (PHASES 1, 3, 4, & 5), PARCEL J, PARCEL K (PHASES 1, 2, & 3), PARCEL L (PHASES 1, 2, 3, & 4). ADJUSTMENTS TO CONSTRUCTION PLANS MADE PER RESIDENT COMMENTS FOR APPROVED SAFETY.
 - THE PARKING MAP IS PROVIDED FOR REFERENCE ONLY. COMPLIANCE TO ALL APPLICABLE CODES, ORDINANCES, AND REGULATIONS IS REQUIRED.



Match Line
For Cont. See Exhibit 6

Match Line
For Cont. See Exhibit 5

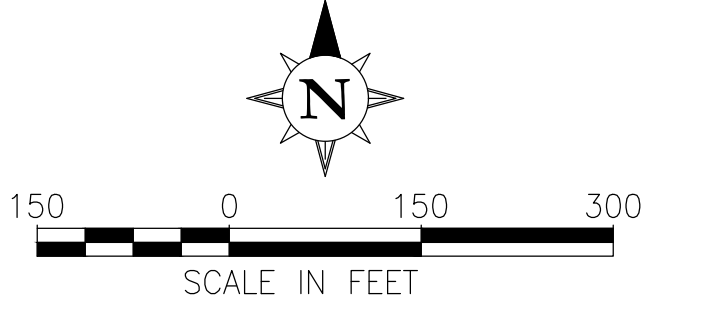
Symbol	Description
	PARKING PERMITTED
	15-MINUTE LOADING ZONE
	NO PARKING PERMITTED

Master On-Site Parking Map

Storey Park Community Development District

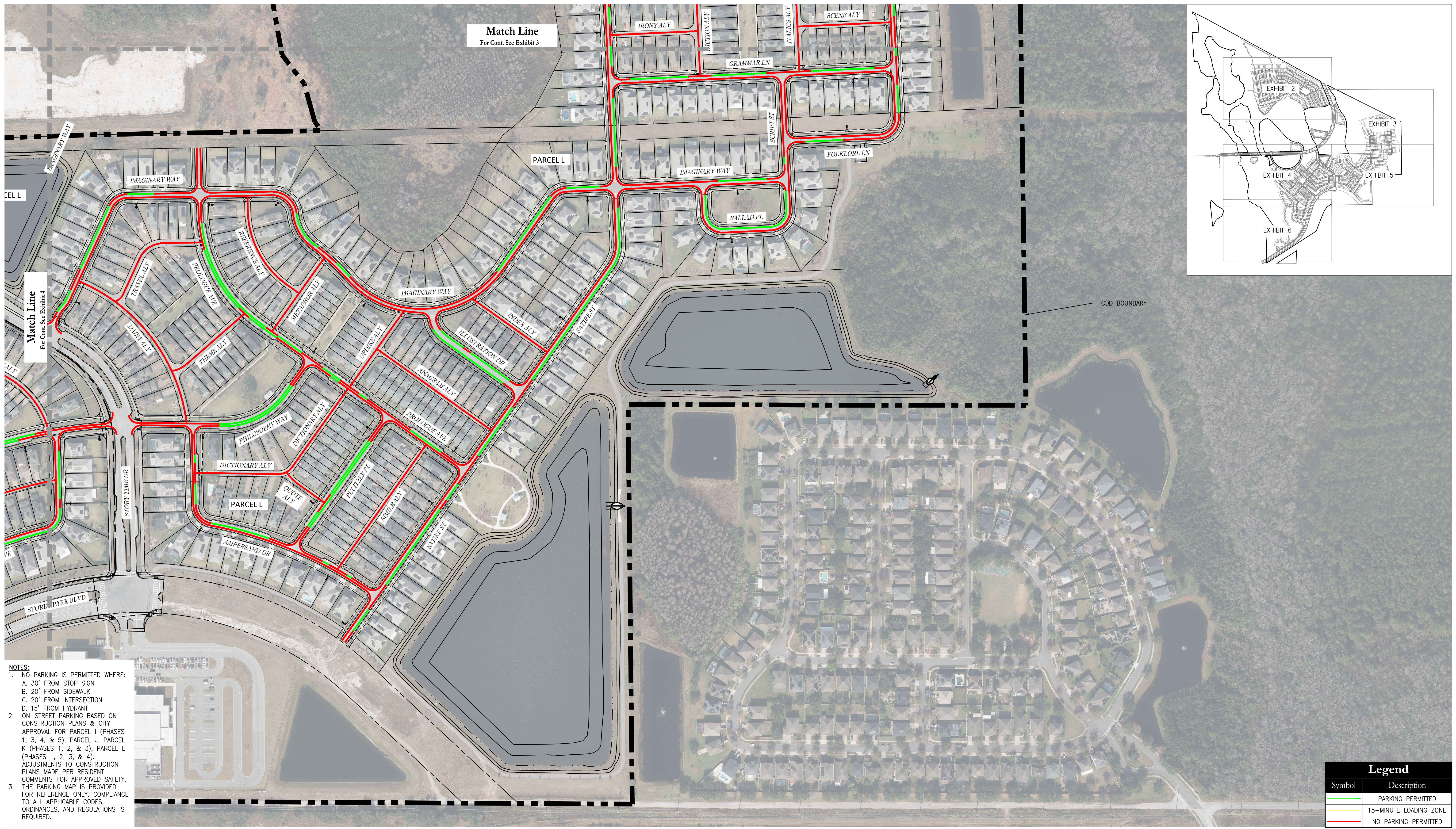
PAPE-DAWSON

2602 E. LIVINGSTON ST | ORLANDO, FL 32803 | 407.487.2594
FLORIDA ENGINEERING FIRM #39101 | FLORIDA SURVEYING FIRM #LB8694



May 21, 2026
PD Job No.: 15-060

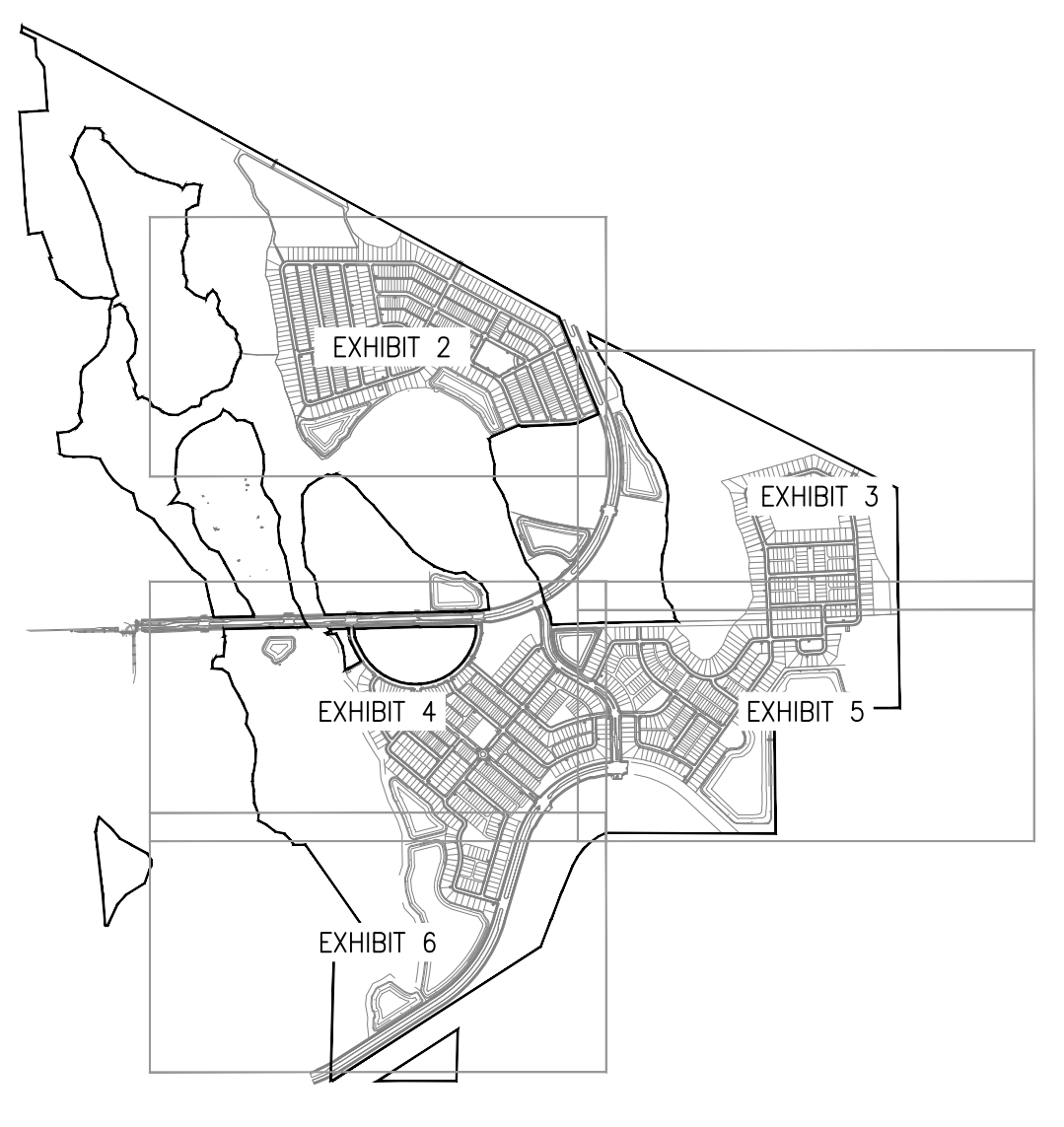
Exhibit 4



Match Line
For Cont. See Exhibit 3

Match Line
For Cont. See Exhibit 4

CDD BOUNDARY



- NOTES:**
- NO PARKING IS PERMITTED WHERE:
 - 30' FROM STOP SIGN
 - 20' FROM SIDEWALK
 - 20' FROM INTERSECTION
 - 15' FROM HYDRANT
 - ON-STREET PARKING BASED ON CONSTRUCTION PLANS & CITY APPROVAL FOR PARCEL I (PHASES 1, 3, 4, & 5), PARCEL J, PARCEL K (PHASES 1, 2, & 3), PARCEL L (PHASES 1, 2, 3, & 4). ADJUSTMENTS TO CONSTRUCTION PLANS MADE PER RESIDENT COMMENTS FOR APPROVED SAFETY. THE PARKING MAP IS PROVIDED FOR REFERENCE ONLY. COMPLIANCE TO ALL APPLICABLE CODES, ORDINANCES, AND REGULATIONS IS REQUIRED.

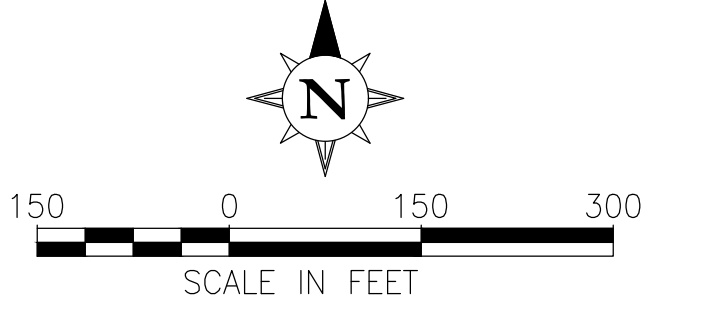
Legend	
Symbol	Description
	PARKING PERMITTED
	15-MINUTE LOADING ZONE
	NO PARKING PERMITTED

Master On-Site Parking Map

Storey Park Community Development District

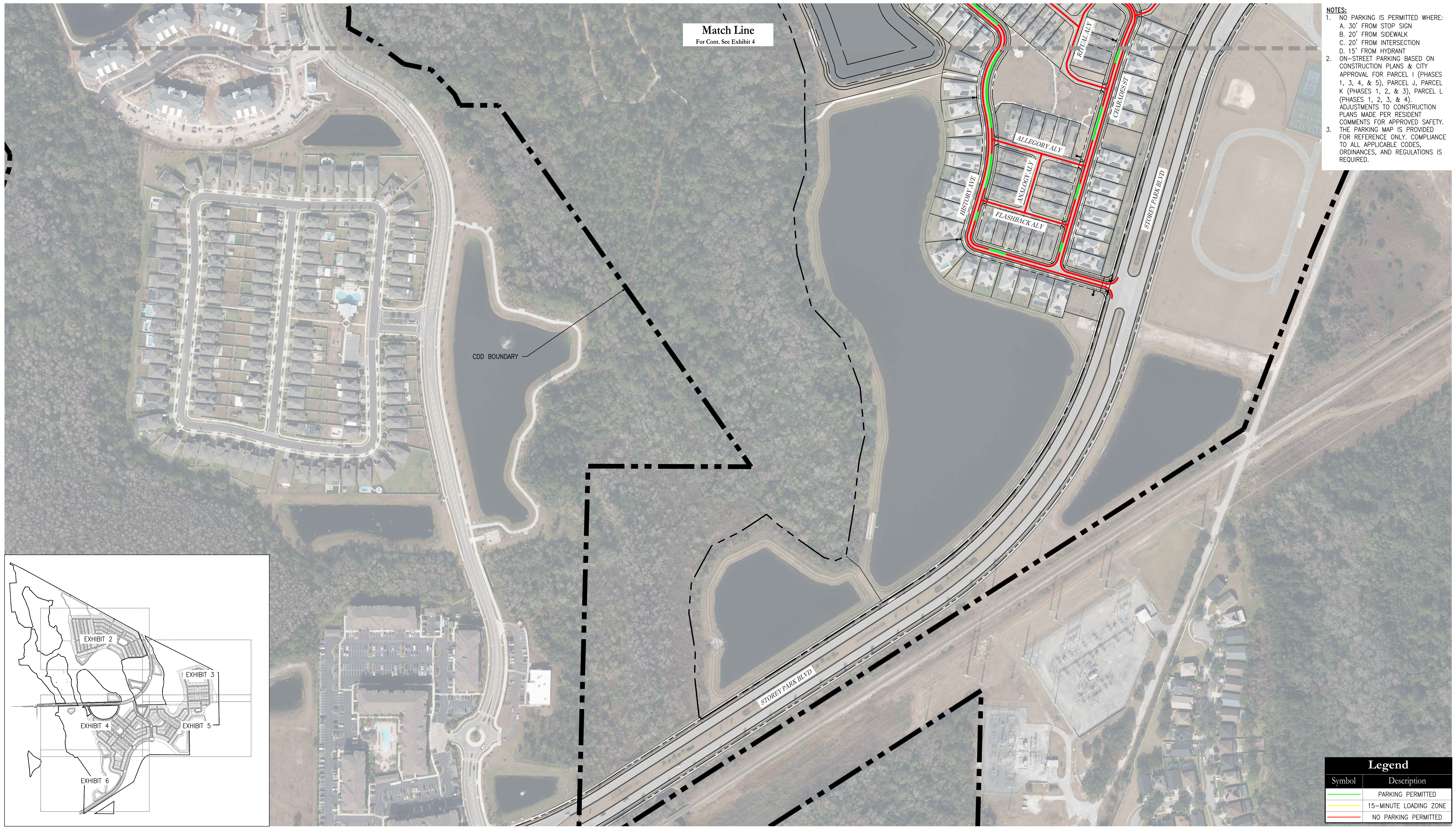
PAPE-DAWSON

2602 E. LIVINGSTON ST | ORLANDO, FL 32803 | 407.487.2594
FLORIDA ENGINEERING FIRM #39101 | FLORIDA SURVEYING FIRM #LB8694



May 21, 2026
PD Job No.: 15-060

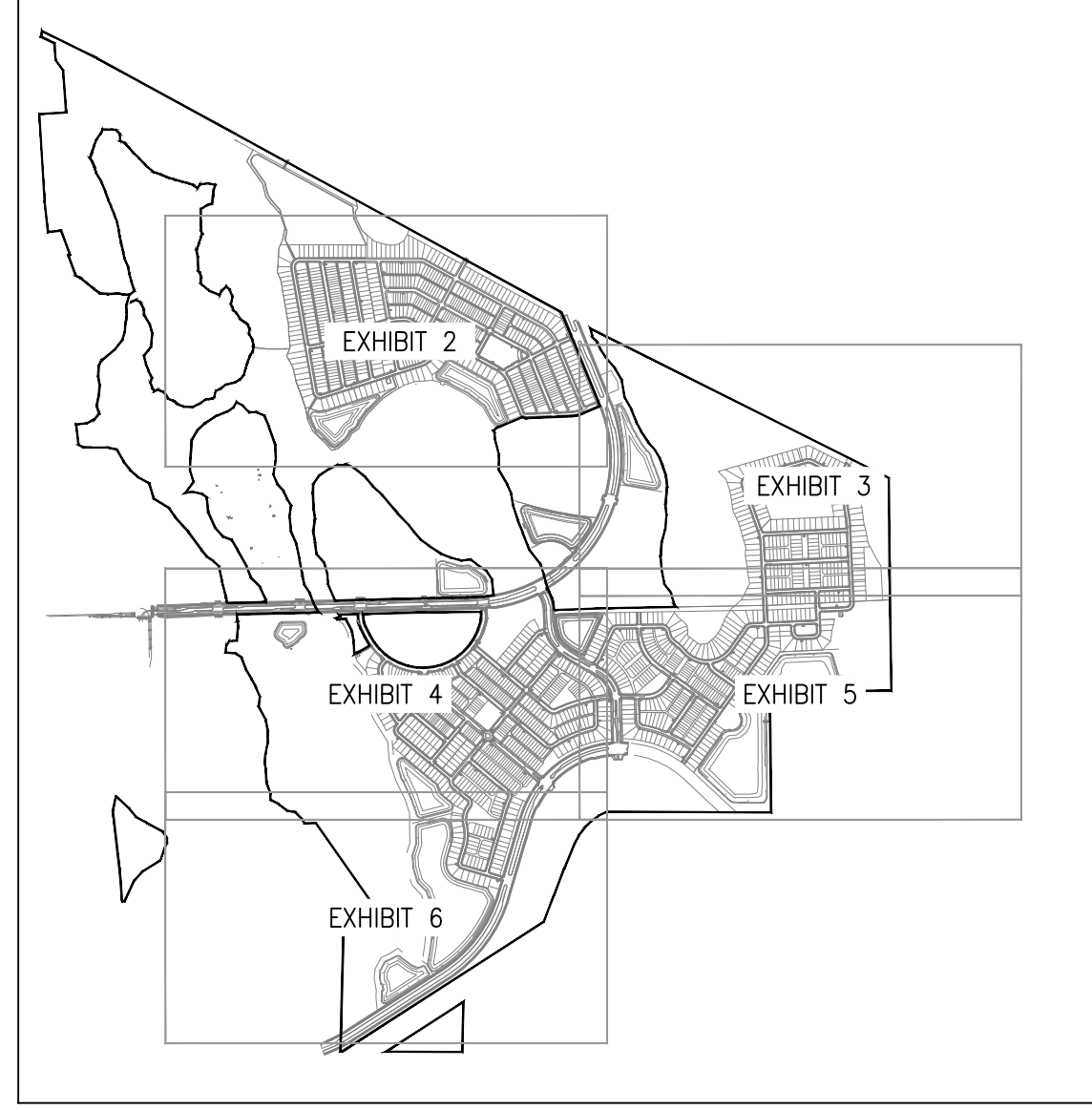
Exhibit 5



- NOTES:**
- NO PARKING IS PERMITTED WHERE:
 - 30' FROM STOP SIGN
 - 20' FROM SIDEWALK
 - 20' FROM INTERSECTION
 - 15' FROM HYDRANT
 - ON-STREET PARKING BASED ON CONSTRUCTION PLANS & CITY APPROVAL FOR PARCEL I (PHASES 1, 3, 4, & 5), PARCEL J (PHASES 1, 3, 4, & 5), PARCEL K (PHASES 1, 2, & 3), PARCEL L (PHASES 1, 2, 3, & 4). ADJUSTMENTS TO CONSTRUCTION PLANS MADE PER RESIDENT COMMENTS FOR APPROVED SAFETY.
 - THE PARKING MAP IS PROVIDED FOR REFERENCE ONLY. COMPLIANCE TO ALL APPLICABLE CODES, ORDINANCES, AND REGULATIONS IS REQUIRED.

Match Line
For Cont. See Exhibit 4

CDD BOUNDARY

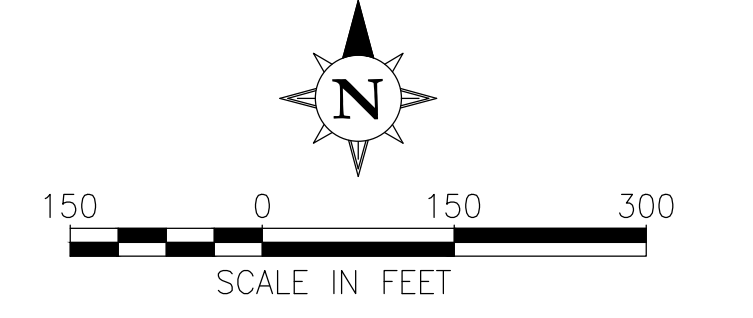


Legend	
Symbol	Description
	PARKING PERMITTED
	15-MINUTE LOADING ZONE
	NO PARKING PERMITTED

Master On-Site Parking Map

Storey Park Community Development District

PAPE-DAWSON
2602 E. LIVINGSTON ST | ORLANDO, FL 32803 | 407.487.2594
FLORIDA ENGINEERING FIRM #39101 | FLORIDA SURVEYING FIRM #LB8694



May 21, 2026
PD Job No.: 15-060

Exhibit 6